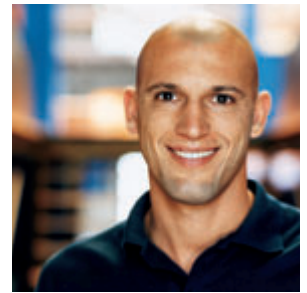


HP Designjet 110plus Series Printers



The HP Designjet 110plus series multi-format printers let you print all your standard and oversize output in color, in-house—in minutes. Print everything from postcards to presentations or spreadsheets to schematics, all with no taping or outsourcing.



Versatile

- **Save time with convenient media handling.** The standard tray holds up to 150 sheets (plain paper) as small as a postcard or as big as a poster (18 x 24 inches). Extra-wide front and rear paths allow oversize output up to 24 inches x 64 inches; automatic roll feed (optional on the 110plus), supports printing up to 24 inches x 50 feet and allows you to switch between loaded media options without intervention.
- **Print using the media that will make you successful.** Create displays, mockups or models with thick or rigid media up to 0.4 mm or 80 lb. And choose from a range of media for office documents or specialized applications, including coated and glossy papers as well as CAD papers and films.

Budget-friendly

- **Single printing solution.** Print a variety of office, CAD and oversize documents from proposals to drawings from only one economical printer.
- **Eliminates expensive outsourcing.** Anyone with occasional large-format needs can economically print documents in-house.
- **Replace only the ink supplies you need.** Modular, individually replaceable supplies make color cost effective.

Professional results

- **Get consistently superb quality for all your professional documents.** Specially formulated inks, the 1200 dpi writing system and HP color layering technology provide a wide gamut of vivid colors, continuous tones and smooth color transitions.
- **Fast results.** Prints at up to 11 pages per minute (ppm) for letter size in Fast mode and 90 seconds per page for 2 x 3 feet drawing in Fast mode.
- **Print crisp, sharp lines and text.** HP technology ensures precise dot placement for excellent image and line quality for all your professional documents. Black, pigmented ink produces dense, dark lines and text with sharp, lasting results for reproduction or long-term storage.
- **Everyday printing plus no compromise CAD results.** Optimized drivers deliver high-quality business documents and images with standard office features like number of copies, zoom and custom page size. AutoCAD drivers handle the intricacies of AutoCAD printing, including line styles and weights, line ends and joins, annotations and raster patterns.



HP Designjet 110plus Series Printers

1. LCD printer status indicator for ink supply maintenance and print messages alert
2. Modular ink system with four independently replaceable ink cartridges so you replace only the ink colors you need
3. Cancel-print button immediately terminates print jobs, saving ink and saving time
4. Front manual feed handles media up to 24 inches wide
5. Standard media tray handles media up to 18 x 24 inches and can accommodate up to 150 sheets (plain paper)
6. Small footprint allows you to place printer on your desktop or common work area
7. Connect via network (standard on 110plus nr) or USB and Centronics parallel IEEE ports
8. Rear manual feed designed to support extra thick media—up to 80 lb
9. Automatic roll-feed (optional on HP Designjet 110plus) feeds rolls up to 24 inches wide



HP Designjet 110plus front shown



HP Designjet 110plus nr rear shown

Series at a glance

HP Designjet 110plus printer

- 150-sheet tray (plain paper) for sheets up to 18 x 24 in
- Slots for single sheets up to 24 x 64 in
- Open EIO slot for optional network connectivity

Optional accessories:

- Printer stand and media bin
- HP Jetdirect 620n internal EIO print server
- Automatic roll feed
- Additional roll-feed spindle

HP Designjet 110plus nr printer

- 150-sheet tray (plain paper) for sheets up to 18 x 24 in
- Slots for single sheets up to 24 x 64 in
- HP Jetdirect 620n internal EIO print server
- Automatic roll feed for printing up to 24" x 50'

Optional accessories:

- Printer stand and media bin
- Additional roll-feed spindle

Expand your in-house color printing capabilities with the HP Designjet 110plus series printers.

Versatility that delivers on productivity, communication and effectiveness

Nearly every business or department can benefit by adding an HP Designjet 110plus printer. On-demand oversize printing, as well as standard office operation, in a single, affordable device can increase efficiency and effectiveness for a wide range of operations, both large and small.

- Construction companies can cost-effectively add onsite printing for plans and schematics.
- Interior designers can create detailed plans and final presentations up to 24 inches wide, as well as prepare estimates, proposals and invoices—all from a single printer.
- Freelance architects or engineering students can print full-size projects and standard-size reports at any hour of the day, without leaving their office or dorm room.
- Finance or IT professionals can present financial data or collaborate on schedules with oversize output from applications like Visio or Excel.
- HR departments and administrative assistants can display posters for employee meetings, onsite events or training classes.
- Facilities managers can easily update required safety notices or manage office space in real-time with no outsourcing.
- Legal departments and law enforcement officials can map crime patterns or create persuasive courtroom graphics.

The quiet operation and small footprint makes the HP Designjet 110plus printer an easy addition to most workspaces. It offers desktop printer ease of use, with no special training or large-format expertise required. There's virtually no maintenance, and each unit is backed by an entire network of professionals and a wide range of services and support available via phone and online.

Customers see big results

Worldwide, companies big and small are seeing the advantages of expanding their in-house printing capabilities. By printing everything from CAD drawings to poster-size presentations, companies are saving money, improving communications and impressing clients with HP Designjet 100 series printers.¹

"Producing...posters for presentations is something that our customers find different and interesting and that increases the interaction we have with them... We know that our HP Designjet 100 large-format printer was excellent value for the money and a good investment because it increases our ability to communicate with our customers."

—*Montserrat Marsal, Senior Manager, PricewaterhouseCoopers, Spain*

"The HP Designjet 100plus is extremely convenient. We can finally print all our own output, with professional quality...all from a single printer! It replaces both our office printer and our plotter. Talk about saving money!"

—*Ivan Perez Bares, T24 Architectural Studios, Spain*

"In the past...the cost was so prohibitive that we had to make do with alternatives such as sticking pieces of paper together with tape. Some things we wanted to do were ruled out completely because of financial considerations...It has become an indispensable tool for our business presentations, and our clients are highly impressed."

—*Dave Jones, IT Consultant, Ashridge Consulting, LTD, UK*

¹ All real customer responses based on usage of HP Designjet 100 printers (C7796A) or HP Designjet 100plus printers (C7796C).

HP Designjet 110plus Series Printers

Technical specifications

HP Designjet 110plus (Product number: C7796D)

HP Designjet 110plus nr (Product number: C7796E)

Print speed, maximum	11 ppm for letter (fast) and 90 seconds for D-size line drawings (fast)	
Print speed, using N5 file	B size: up to 4 min/page (Normal, glossy); B size: up to 6 min/page (Best, glossy) / D size: up to 14.5 min/page (Normal, glossy); D size: up to 21.5 min/page (Best, glossy)	
Resolution, maximum	Up to 1200 x 600 dpi	
Print margins (B-size)	Top: 0.2 in; bottom: 0.47 in; left: 0.2 in; right: 0.2 in	
Memory	64 MB	
Media		
Media handling	Automatic paper tray for 150 sheets up to 18 x 24 in; front manual-feed path for single sheets up to 24 inches wide; rear manual path for thick media	Automatic paper tray for 150 sheets up to 18 x 24 in; front manual-feed path for single sheets up to 24 inches wide; rear manual path for thick media; auto 24" roll feed with auto cutter
Types	Paper (plain, coated, natural tracing, photo, glossy, brochure, heavyweight), transparencies, vellum, translucent bond	
Weight (by paper path)	Tray 1: 17.3 to 40 lb; manual single-sheet feed: 17.3 to 40 lb; rear path: up to 80 lb	
Thickness (by paper path)	Tray 1: up to 0.008 in, envelopes: up to 0.015 in; front path: up to 0.008 in; rear path: up to 0.015 in	
Media size	Postcards, letter, legal, tabloid, C, D, D+, envelopes	
Printing		
Print technology	HP Thermal Inkjet	
Print technology resolution	HP color layering technology, PhotoREt	
Print cartridge colors	Black, cyan, magenta, yellow	
Ink types	Pigment-based (black), dye-based (cyan, magenta, yellow)	
Connectivity		
Interfaces	Standard: USB 1.1 (Microsoft® Windows® 98 second edition, Me, 2000 and XP) USB 2.0 compliant, Centronics parallel IEEE 1284 compliant (ECP), 1 EIO slot, Optional: HP Jetdirect 620n, HP Jetdirect 610n, HP Jetdirect 600n, HP Jetdirect 175x, HP Jetdirect 600n, HP Jetdirect 175x, HP Jetdirect HP Jetdirect 310x, HP Jetdirect 380x	Standard: USB 1.1 (Microsoft® Windows® 98 second edition, Me, 2000 and XP) USB 2.0 compliant, Centronics parallel IEEE 1284 compliant (ECP), 1 EIO slot, HP Jetdirect 620n, Optional: HP Jetdirect 680n, HP Jetdirect 610n, 600n, HP Jetdirect 175x, HP Jetdirect 310x, HP Jetdirect 380x
Languages	PCL3-GUI	
Drivers (included)	PCL3-GUI Windows driver, Microsoft Windows drivers (95, 98, Me, NT 4.0, 2000, XP) including support for AutoCAD 2000 and AutoCAD 13-14 drivers, USB and ECP drivers, Raster driver for Mac OS (9.x, OS X v10.1, 10.2, 10.3)	
Standard operating systems	Microsoft Windows 98 SE, Me, NT 4.0, 2000, XP; Mac OS 9.2, 10.2, 10.3	Microsoft Windows 98 SE, Me, NT 4.0, 2000, 2003, XP; Mac OS 9.1, OS X v10.1.5, 10.2, 10.3
Network operating systems	Microsoft Windows Server 2003, Mac OS 9.1, OS X v10.1.5	
System requirements		
Minimum	Windows: Microsoft Windows 95, 98: Pentium® I, 133 MHz, 48 MB RAM, 300 MB available hard disk space; Microsoft Windows NT™: Pentium II, 300 MHz, 64 MB RAM, 400 MB available hard disk space; Microsoft Windows 2000, 2003: Pentium III, 300 MHz, 128 MB RAM, 400 MB available hard disk space; Microsoft Windows XP: Pentium III, 733 MHz, 128 MB RAM, 400 MB available hard disk space; Mac: iMac G3, Mac OS 9.1, 128 MB RAM, 100 MB available hard disk (Compatible Mac Hardware: iMac G3, G4, G5, G4 dual proc., G5 dual proc., iBook, PowerBook, eMac)	
Recommended	Windows: Microsoft Windows 95, 98: Pentium I, 133 MHz, 64 MB RAM, 320 MB available hard disk space; Microsoft Windows NT: Pentium III, 733 MHz, 128 MB RAM, 2 GB available hard disk space; Microsoft Windows 2000, 2003: Pentium III, 733 MHz, 256 MB RAM, 2 GB available hard disk space; Microsoft Windows XP: Pentium IV, 1 GHz, 256 MB RAM, 2 GB available hard disk space; Mac: Mac OS 9 v 9.2, Mac OS X v 10.1.5, v10.2.2 and higher, v 10.3, G3 dual processor, 1 GB RAM, 1 GB available hard disk space	
Dimensions		
Printer	41 x 16.3 x 8.7 in	41 x 21 x 8.7 in
Maximum	41 x 40.1 x 8.7 in	
Shipping	46.9 x 21.5 x 19.4 in	
Weight		
Printer	48.5 lb	50.7 lb
Shipping	75 lb	75.5 lb
What's in the box	HP Designjet 110plus printer, power cord, USB cable, printheads (4), ink cartridges (4), input C/A2size output tray, software setup for Windows users CD, drivers CD for Mac, User documentation CD, Setup Poster, Quick Guide, Cust. Service Guide	HP Designjet 110plus nr printer, power cord, parallel cable (AP), USB cable, printheads (4), ink cartridges (4), input C/A2size tray, output tray, setup for Windows users CD, drivers CD for Mac, User documentation CD, Setup Poster, Quick Start Guide, Cust. Service Guide, auto roll feed

Environmental ranges

Operating temperature:	41 to 104° F (5 to 40° C)
Recommended operating temperature:	59 to 86° F (15 to 30° C)
Storage temperature:	-4 to 131° F (-20 to 55° C)
Operating humidity:	20 to 80% RH
Recommended humidity:	20 to 80% RH
Storage humidity:	20 to 80% RH

Acoustics

Sound pressure:	50 dB(A)
Sound pressure, standby:	37 dB(A)
Sound power:	6.2 B(A)

Power requirements

Input voltage:	100 to 240 VAC (± 10%), 50/60 Hz (± 3Hz), 2 amp maximum
----------------	---

Power consumption

Maximum:	47.5 watts
Standby:	13.9 watts

Power certification

Safety certifications:	ITE product compliance, EU LVD, CSA Certified for US and Canada, Mexico NOM-1-NYCE, Argentina, IRAM, China CCC, Singapore PSB, Russia: GOST, Poland PCBC, Korea KTL
Electromagnetic compatibility:	Compliant with requirements for Class B ITE products (Class A when connected to LAN cables), EU (EMC Directive), USA (FCC rules), Canada (DOC), Australia (ACA), New Zealand (MoC), China (CCC), Japan (VCCI), Class A for Korea (MIC), Taiwan (BSMI)

ENERGY STAR® compliant

Warranty

One-year warranty



HP recommends Microsoft® Windows® XP Professional for mobile computing.

ENERGY STAR and the ENERGY STAR logo are U.S. registered marks of the United States Environmental Protection Agency. Microsoft, Windows and Windows NT are U.S. registered trademarks of Microsoft Corporation. Pentium is a registered trademark of Intel Corporation or its subsidiaries in the United States and other countries.

© 2004 Hewlett-Packard Development Company, L.P. The information contained herein is subject to change without notice. The only warranties for HP products and services are set forth in the express warranty statements accompanying such products and services. Nothing herein should be construed as constituting an additional warranty. HP shall not be liable for technical or editorial errors or omissions contained herein.

Ordering information

Product number HP product

C7796D	HP Designjet 110plus
C7796E	HP Designjet 110plus nr

Supplies and accessories

Q1246A	HP Designjet 110/120/130 Stand & Bin
Q1247A	HP Designjet 110/120/130 Auto Roll Feed
Q1264A	HP Designjet 110/120/130 Spindle Accessory

Ink supplies

C4810A	HP 11 Black Printhead
C4811A	HP 11 Cyan Printhead
C4812A	HP 11 Magenta Printhead
C4813A	HP 11 Yellow Printhead
C4844A	HP 10 Black Ink Cartridge (69 ml)
C4836AN	HP 11 Cyan Ink Cartridge (28 ml)
C4837AN	HP 11 Magenta Ink Cartridge (28 ml)
C4838AN	HP 11 Yellow Ink Cartridge (28 ml)

Media²

Q1961A	HP Coated Paper, C, 100 sheets
Q1962A	HP Coated Paper, D, 100 sheets
C6019B	HP Coated Paper-24" x 120"
Q1404A	HP Coated Paper-Universal-24" x 150"
C7929A	HP Super heavy weight Coated Paper-24" x 75"
Q1396A	HP Universal Bond-24" x 150"
C1860A	HP Bright White Inkjet Paper
C8315A	HP Basic High-Gloss Photo Paper-24" x 100"
C8310A	HP Basic Photo Satin-24" x 100"

Network and software

J7934A	HP Jetdirect 620n LAN card
--------	----------------------------

² For a complete list of all media that work with HP Designjet 110plus Series printers, please take a look at www.hp.com/media.

For more information visit our website at www.hp.com

5982-6844ENUC, 8/9/2004

